



United States Department of Agriculture  
**National Agricultural Statistics Service**

---

---

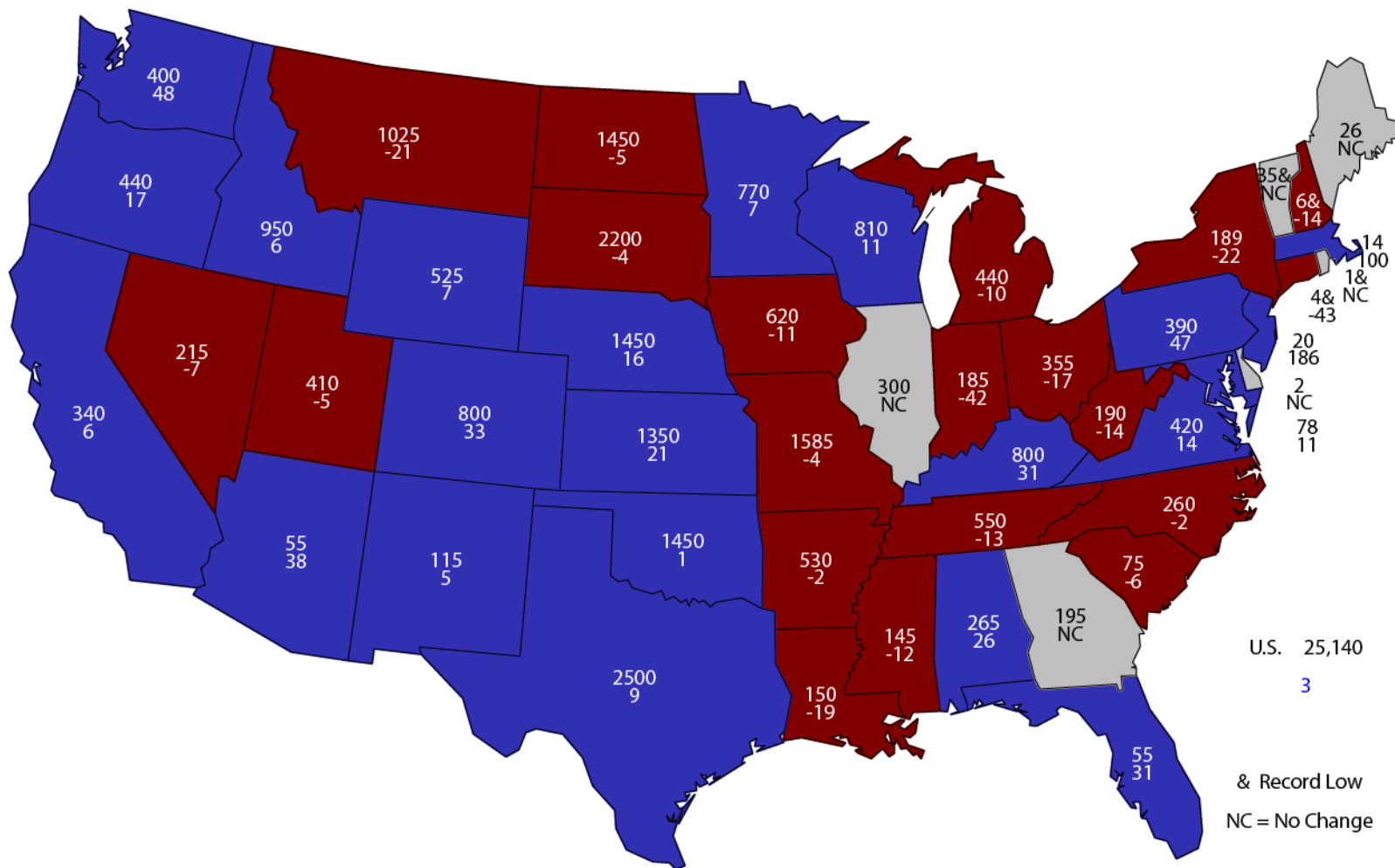
## **CARC November 22, 2016**

October Crop Report  
November Crop Report  
Crop Progress and Condition November 20

Nick Streff  
USDA NASS

# May 1, 2016 Hay Stocks

(000) Tons and Percent Change From Previous Year



U.S. 25,140  
3  
& Record Low  
NC = No Change



# NEWS RELEASE

NATIONAL AGRICULTURAL STATISTICS SERVICE

United States Department of Agriculture • Northern Plains Region  
100 Centennial Mall North, Room 263, Lincoln, NE 68508 • (800) 582-6443

[www.nass.usda.gov](http://www.nass.usda.gov)



**FOR IMMEDIATE RELEASE**

October 12, 2016

**Contact:** Dean C. Groskurth

(800) 582-6443

[dean.groskurth@nass.usda.gov](mailto:dean.groskurth@nass.usda.gov)

## NEBRASKA CROP PRODUCTION REPORT

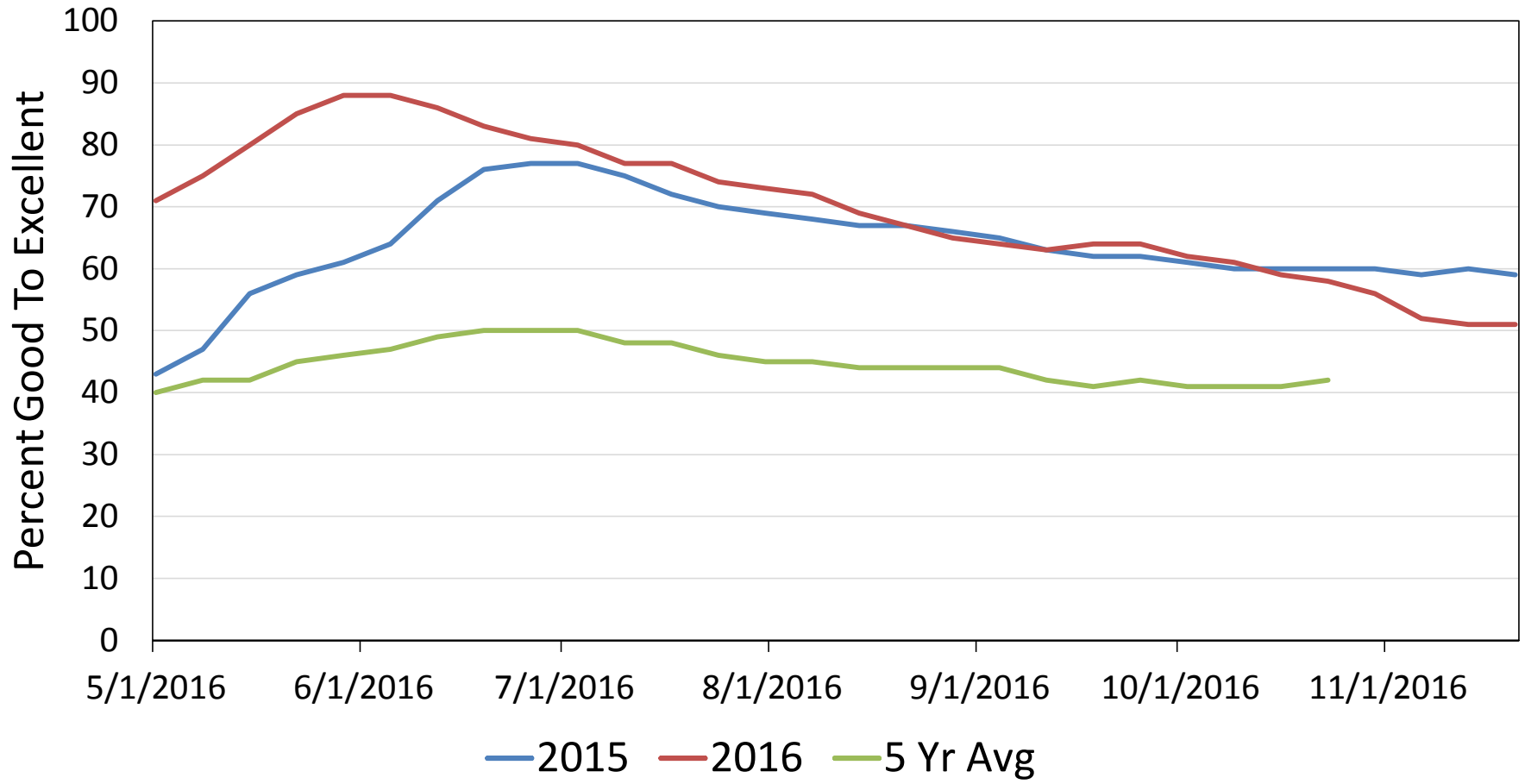
**Lincoln, NE** – Based on October 1 conditions, Nebraska's 2016 **alfalfa hay** production is forecast at 3.04 million tons, down 6 percent from last year, according to the USDA's National Agricultural Statistics Service. Acreage harvested is estimated at 800,000 acres, down 6 percent from a year ago. Average yield is forecast at 3.80 tons per acre, down 0.20 ton from last year.

**All Other Hay** production, at 3.06 million tons, is up 3 percent from 2015. Area for harvest, at 1.80 million acres, is down 3 percent from a year ago. Record yield forecast, at 1.70 tons per acre, is up 0.10 ton from last year.



# Pasture Condition

## Percent Good to Excellent





## NEBRASKA CROP PRODUCTION REPORT

**LINCOLN, Neb. November 9, 2016** – Based on November 1 conditions, Nebraska's 2016 **corn** production is forecast at a record high 1.75 billion bushels, up 3 percent from last year, according to the USDA's National Agricultural Statistics Service. Acreage harvested for grain is estimated at 9.50 million acres, up 4 percent from a year ago. Average yield is forecast at 184 bushels per acre, down 1 bushel from last year.

**Soybean** production in Nebraska is forecast at a record high 319 million bushels, 4 percent above last year. Area for harvest, at 5.15 million acres, is down 2 percent from 2015. Record yield is forecast at 62 bushels per acre, up 4 bushels from a year ago.

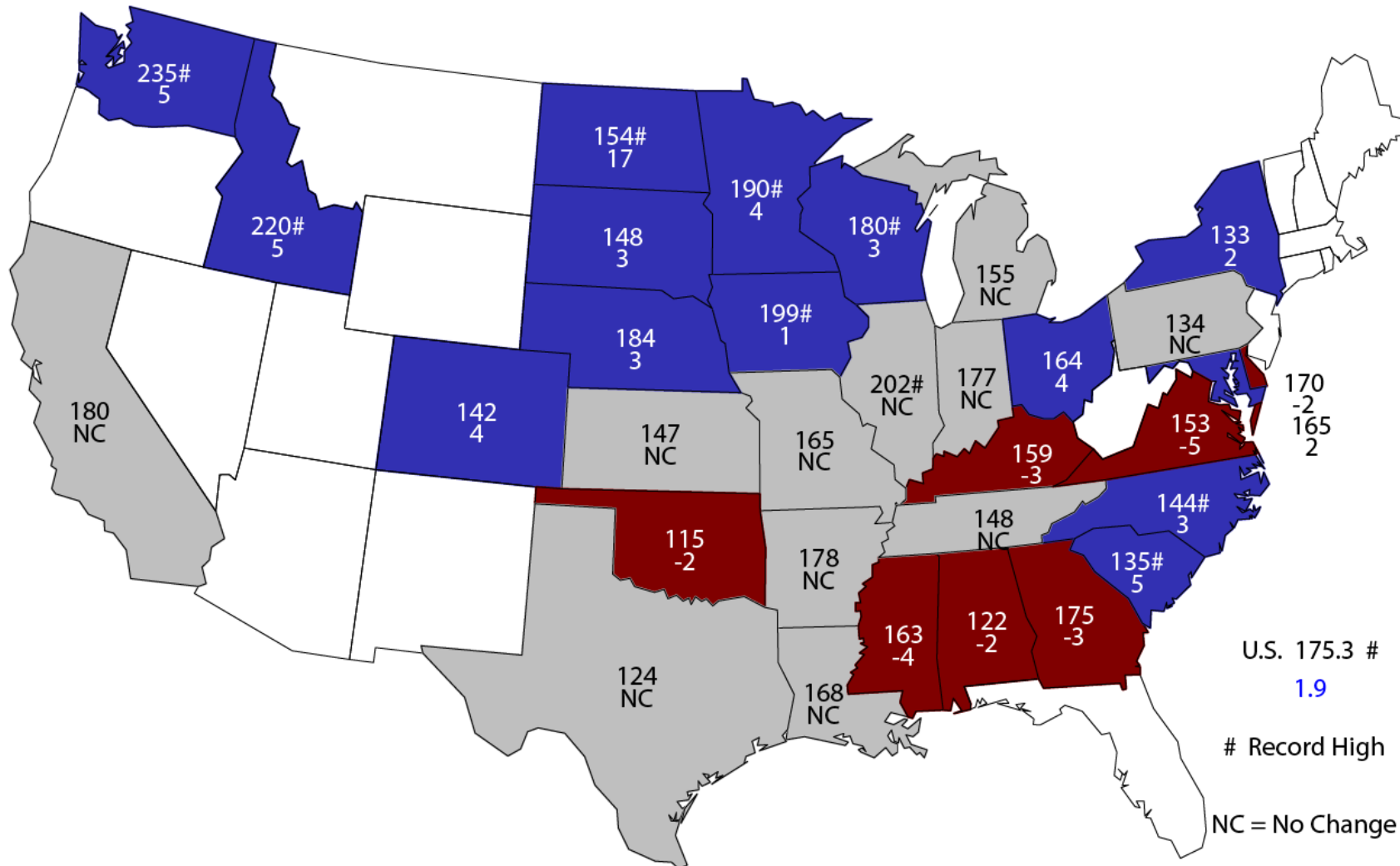
**Sorghum** production of 15.5 million bushels is down 33 percent from a year ago. Area for grain harvest of 170,000 acres is down 29 percent from last year. Yield is forecast at 91 bushels per acre, down 5 bushels from last year.

**Sugarbeet** production is forecast at 1.48 million tons, up 11 percent from 2015. Area for harvest, at 47,000 acres, is up slightly from last year. Record yield is estimated at 31.5 tons per acre, up 3.1 tons per acre from a year ago.

**Potato** acres of 16,000 were planted in 2016, up 3 percent with harvested set at 15,900 acres, up 4 percent. Production is forecast at 7.08 million hundredweight, up 3 percent from last year. Yield is forecast at 445 hundredweight per acre, down 5 hundredweight from 2015.

# November 1, 2016 Corn Yield

## Bushels and Change From Previous Month



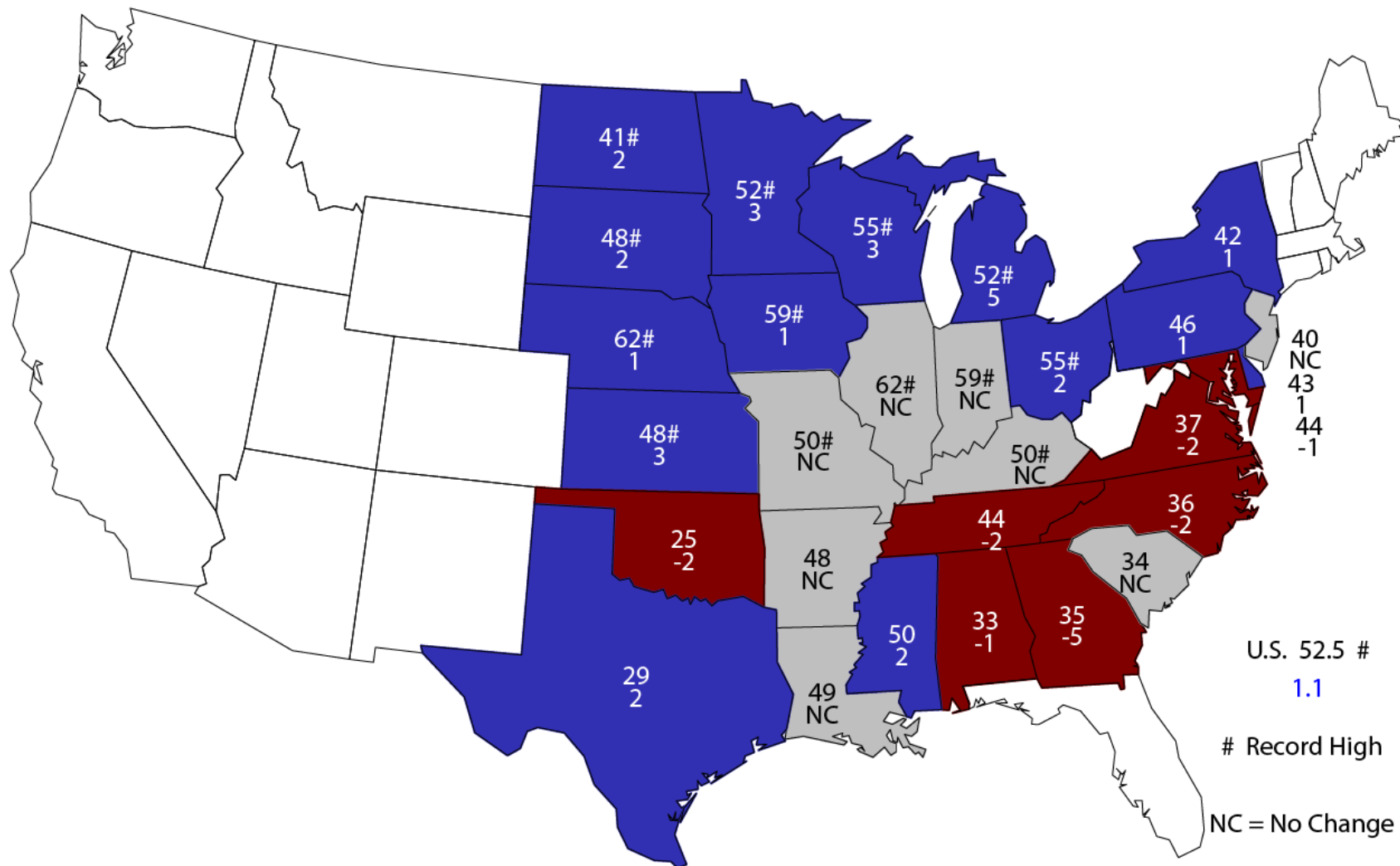
U.S. 175.3 #  
1.9

# Record High

NC = No Change

# November 1, 2016 Soybean Yield

## Bushels and Change From Previous Month



U.S. 52.5 #  
1.1

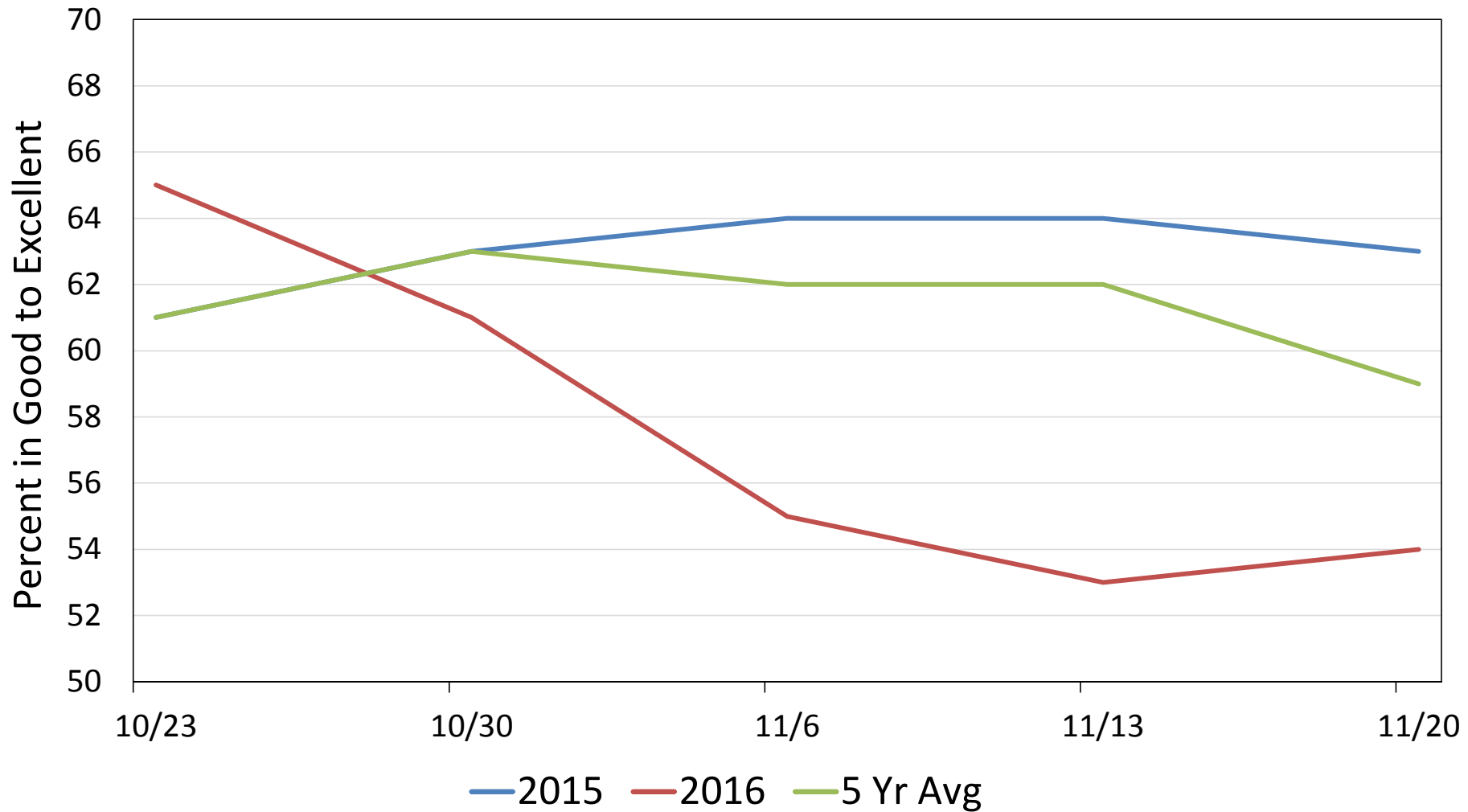
# Record High

NC = No Change



# Wheat Condition

## Percent Good to Excellent







# Nebraska Crop Progress Soil Moisture



Topsoil	Nov 20, 2016	Last Year
<i>Percent</i>		
Very Short	14	5
Short	36	21
Adequate	49	71
Surplus	1	3
Subsoil		
Very Short	12	5
Short	32	25
Adequate	55	69
Surplus	1	1



# Nebraska County Estimates

## Release Schedule for Preliminary 2016 and Revised 2015 Crop County Estimates

Winter Wheat	Thursday, December 15
Oats	Thursday, December 15
Corn for Grain	Thursday, February 23
Soybeans	Thursday, February 23
Sorghum	Thursday, February 23
Sunflower, Non-Oil & Oil	Thursday, February 23
Hay, Alfalfa & Other	Thursday, April 13
Dry Edible Beans	Thursday, April 27
Sugarbeets	Thursday, June 1



United States Department of Agriculture  
National Agricultural Statistics Service



---

---

Upcoming Surveys & Reports

Quarterly Agricultural Survey

Nov 30 – Dec 16

Annual Crop Production  
Grain Stocks

January 12  
January 12

Cattle Survey  
Cattle Report

Dec 29 – Jan 15  
January 31



United States Department of Agriculture  
**National Agricultural Statistics Service**

---

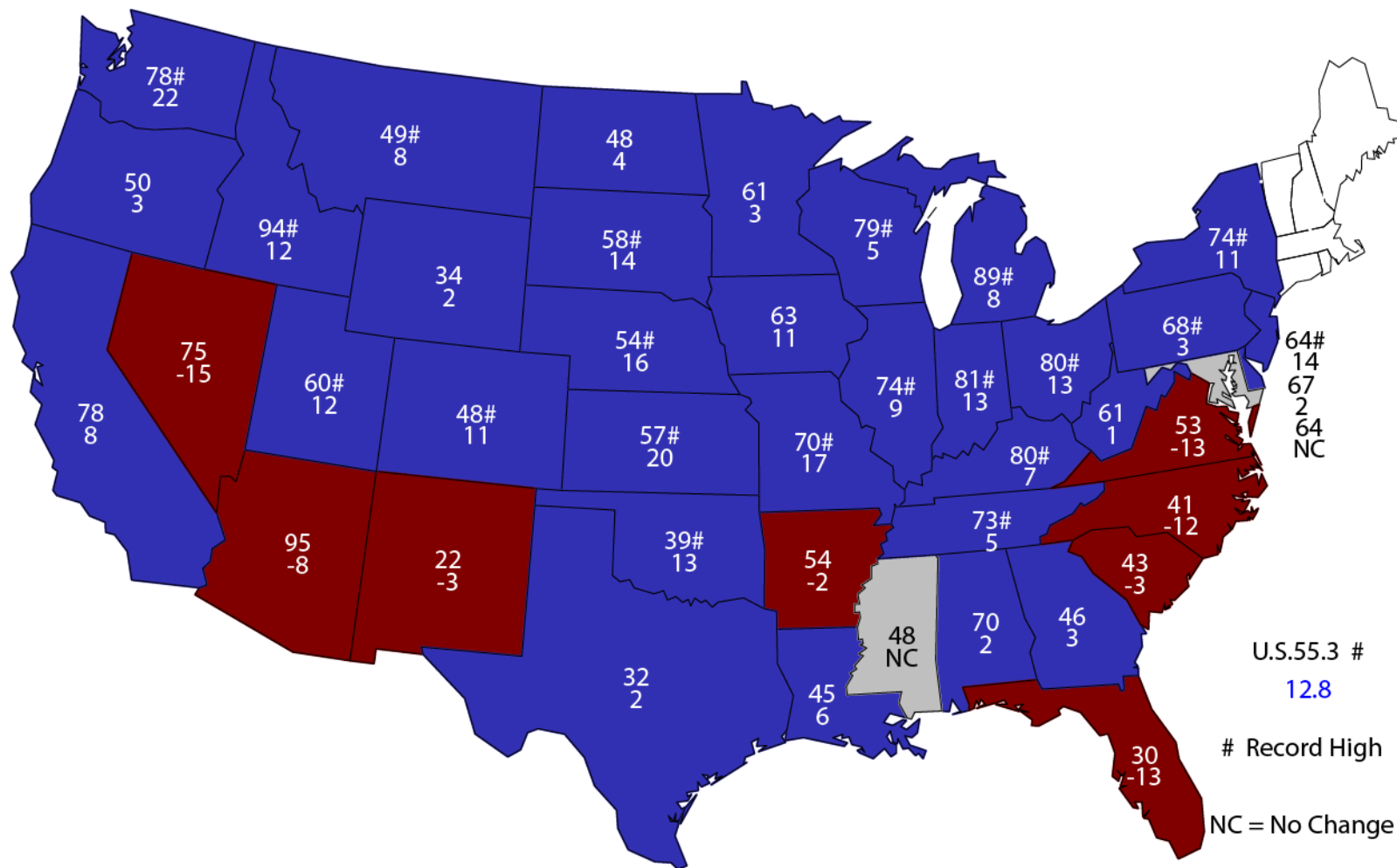
---

**All Reports Available At**  
[www.nass.usda.gov](http://www.nass.usda.gov)

**For Questions**  
800-582-6443  
[nassrfonpr@nass.usda.gov](mailto:nassrfonpr@nass.usda.gov)

# 2016 Winter Wheat Yield

## Bushels and Change From Previous Year



U.S. 55.3 #  
12.8

# Record High

NC = No Change